



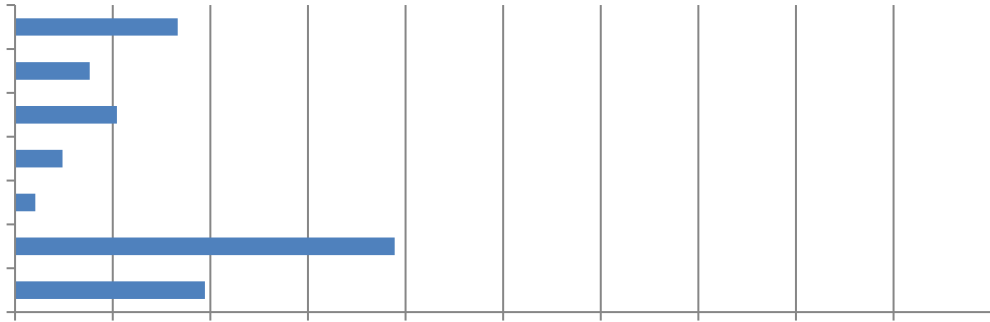
# National MidwestResults

6 5 3



1. 1. 1.

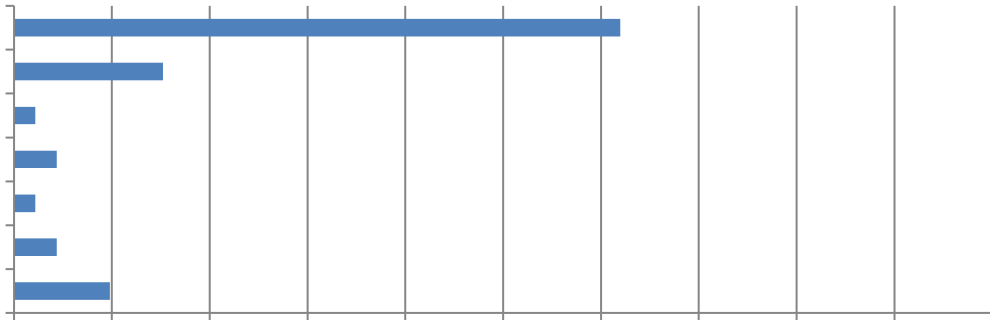
(4 4 1)



2. 1. 1.

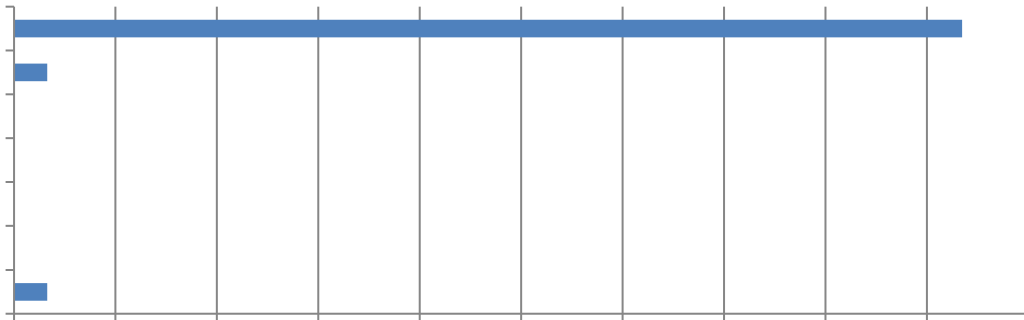
6

(2 1)



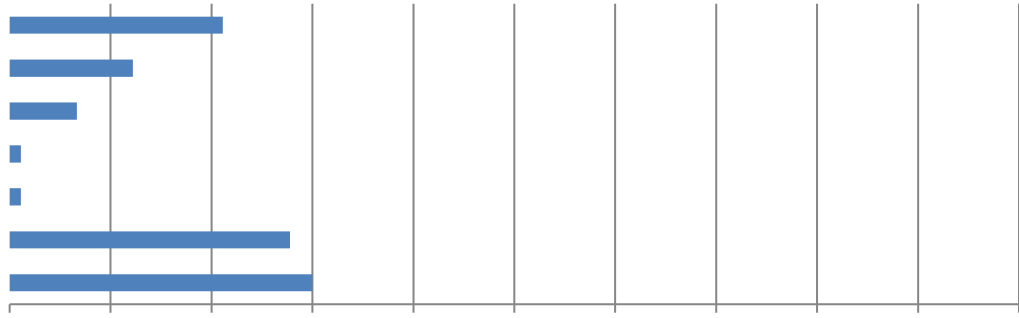
3. 1. 1.

(2 1)



4. 抄

(9 分)



5. 抄

抄

(9 分)

6. 抄

(2 分)

7. 抄  
抄

9 (分)

8.  $\frac{1}{2}$   
(1)

)  $\frac{1}{2}$   $\frac{1}{2}$

9.  $\frac{1}{2}$   
 $\frac{1}{2}$  (14  $\frac{1}{2}$

$\frac{1}{2}$

10.  $\frac{1}{2}$

$\frac{1}{2}$

(1