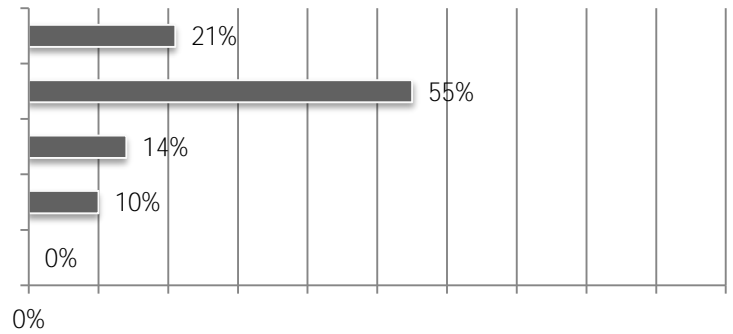
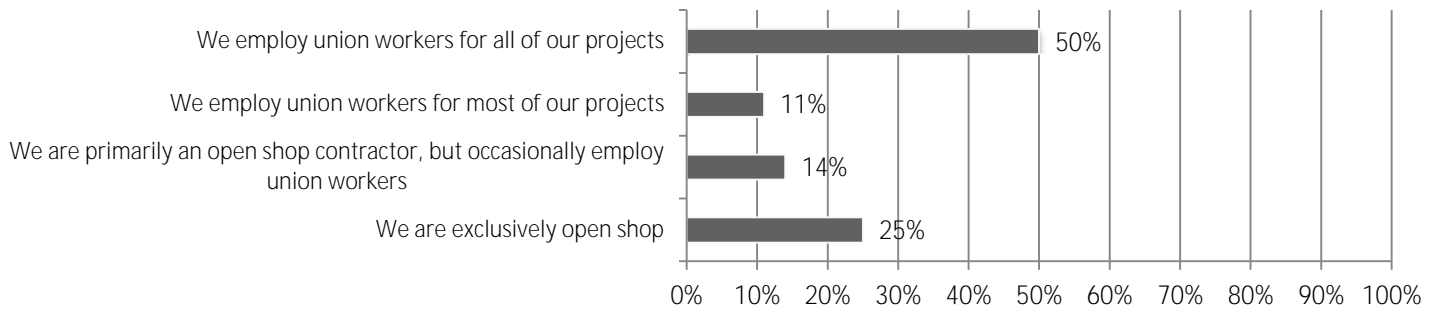
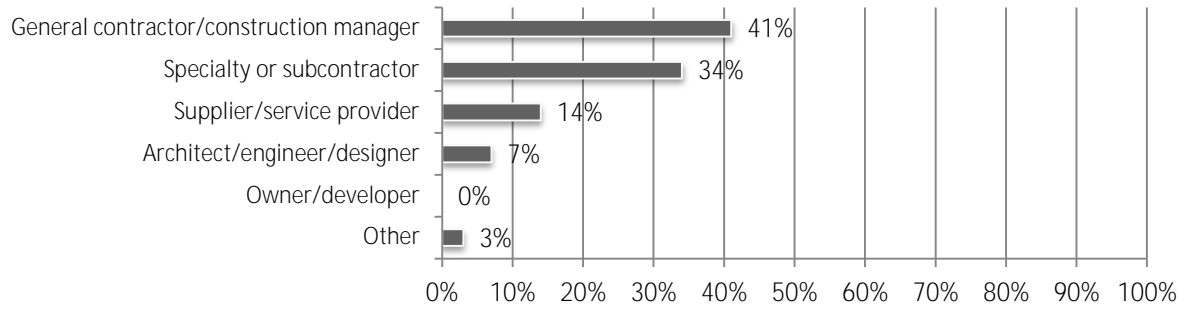
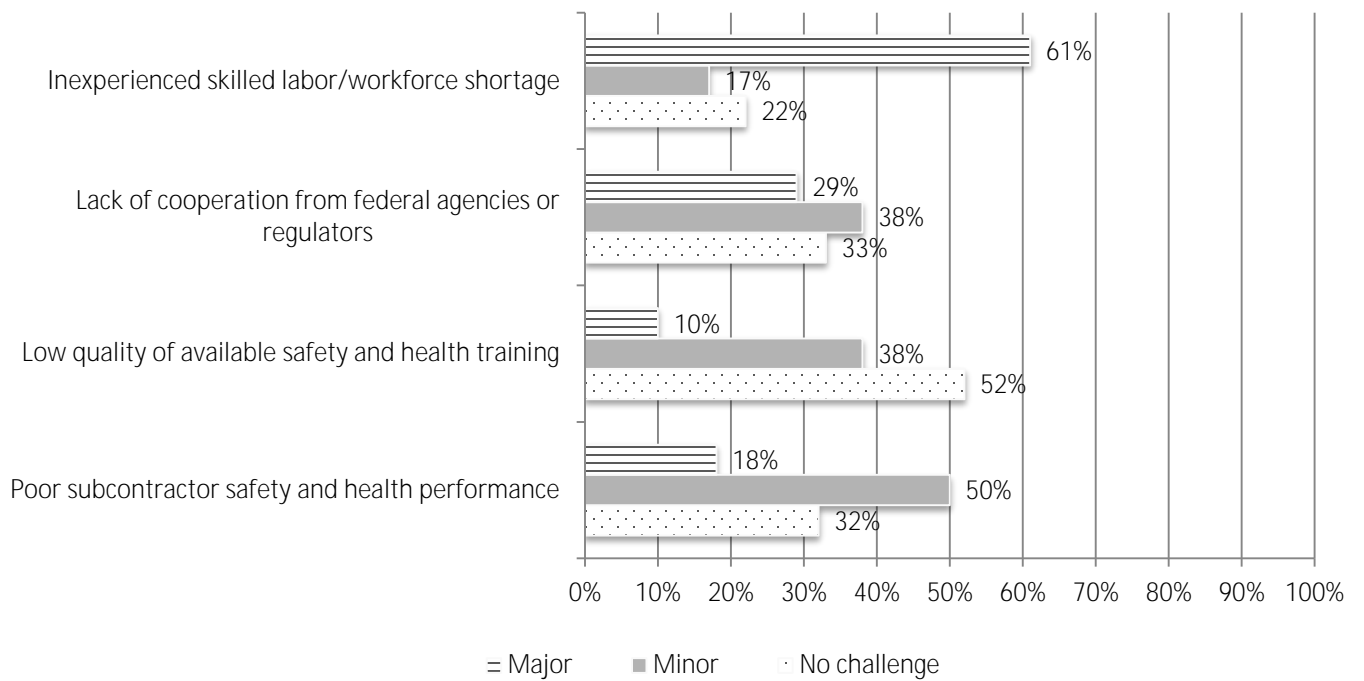
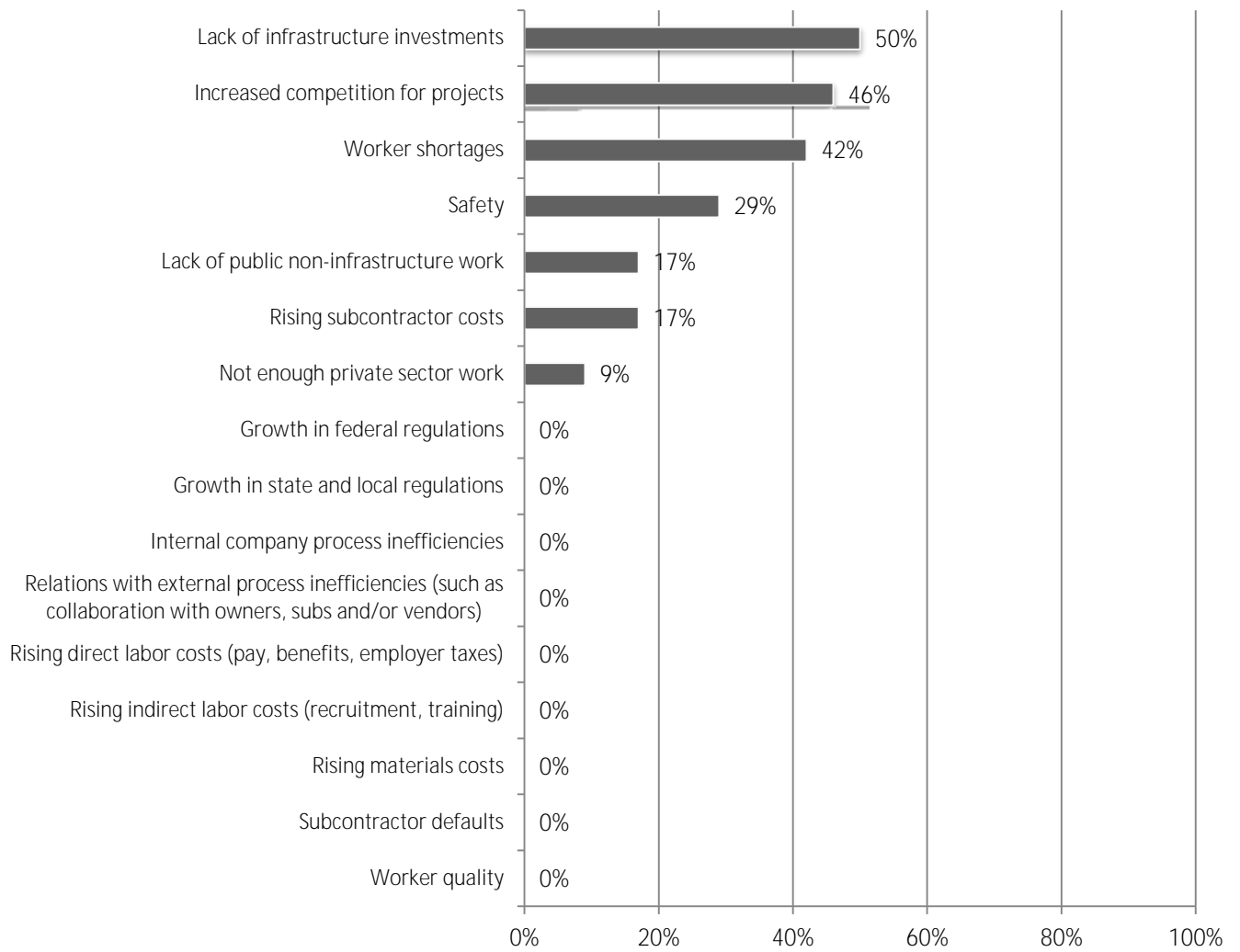
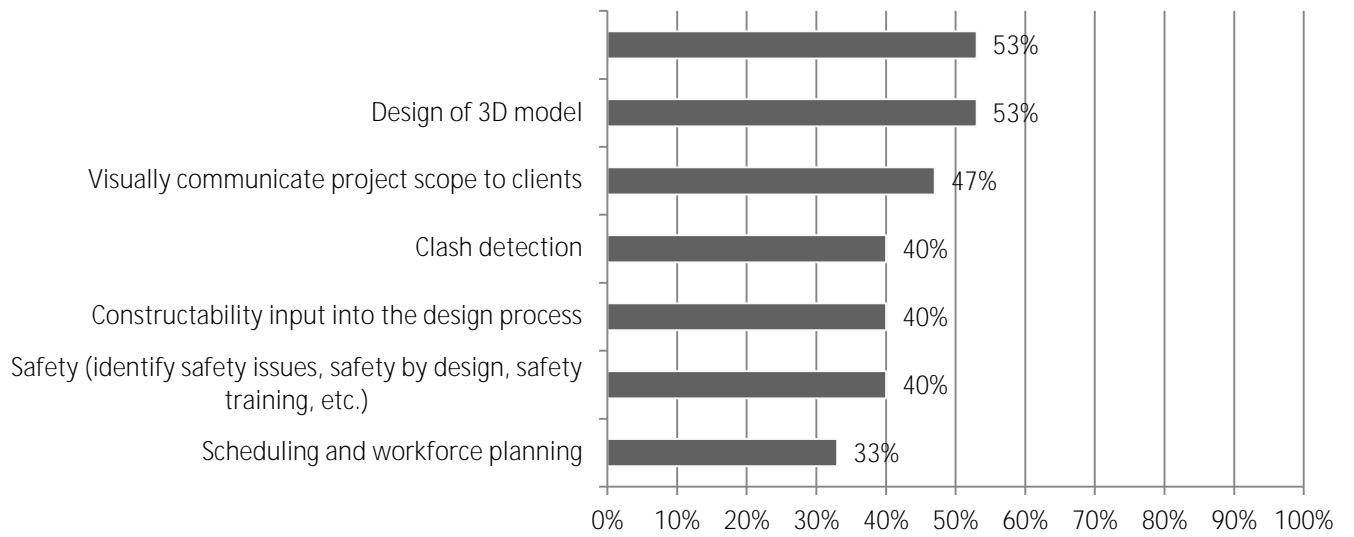
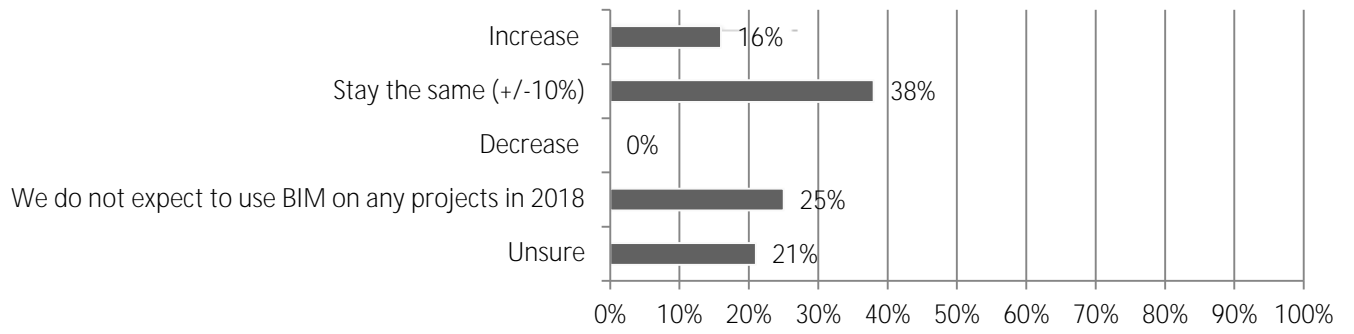


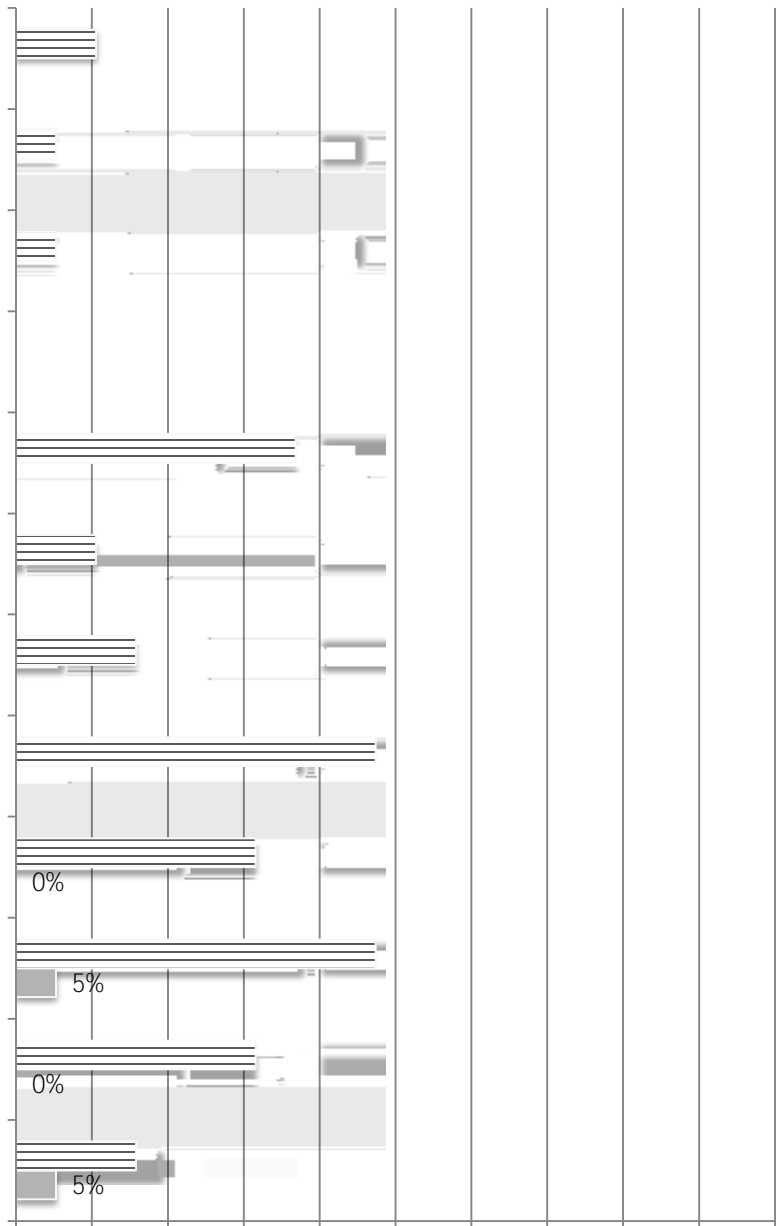
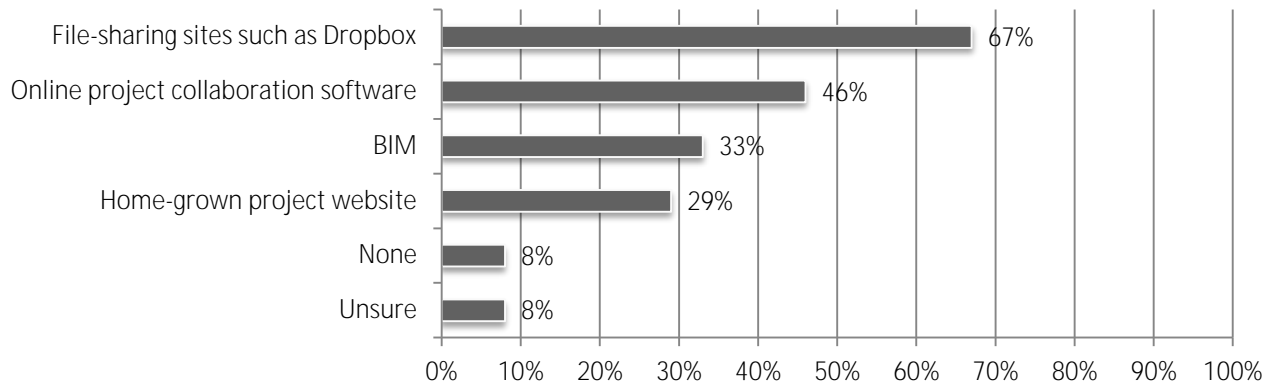
Total Responses: 29. Responses varied for some questions. Percentages are based on responses to each question and may not sum to 100 due to rounding.

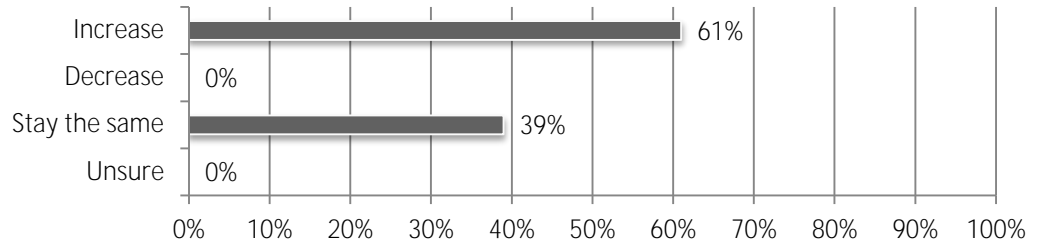
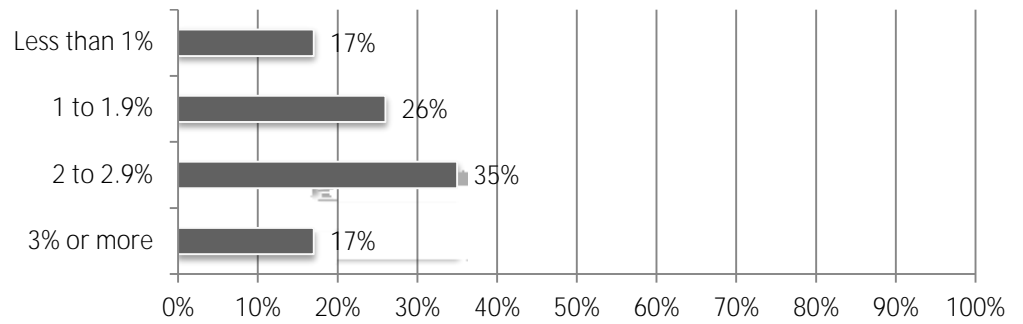


**Net equals difference between number of "Higher" and "Lower" responses as percent of total.*









Accounting software	32%	64%	5%	0%
Building Information Modeling	22%	56%	0%	22%
Client relationship management software	37%	58%	0%	5%
Document management software	62%	38%	0%	0%
Estimating software	45%	55%	0%	0%
Fleet tracking/management software	22%	61%	0%	17%
Human resources software	6%	89%	0%	6%
Payroll software	27%	68%	0%	5%
Prequalification software	6%	88%	0%	6%
Project collaboration software	17%	78%	0%	6%
Project management software	40%	55%	5%	0%
Scheduling software	30%	70%	0%	0%
Service management software	6%	88%	0%	6%
Subcontractor bid management/IT B software	5%	95%	0%	0%

