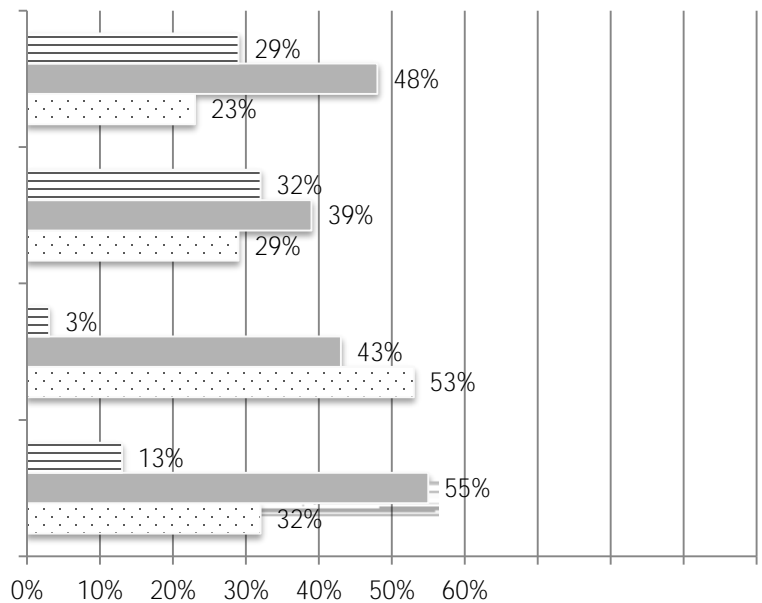
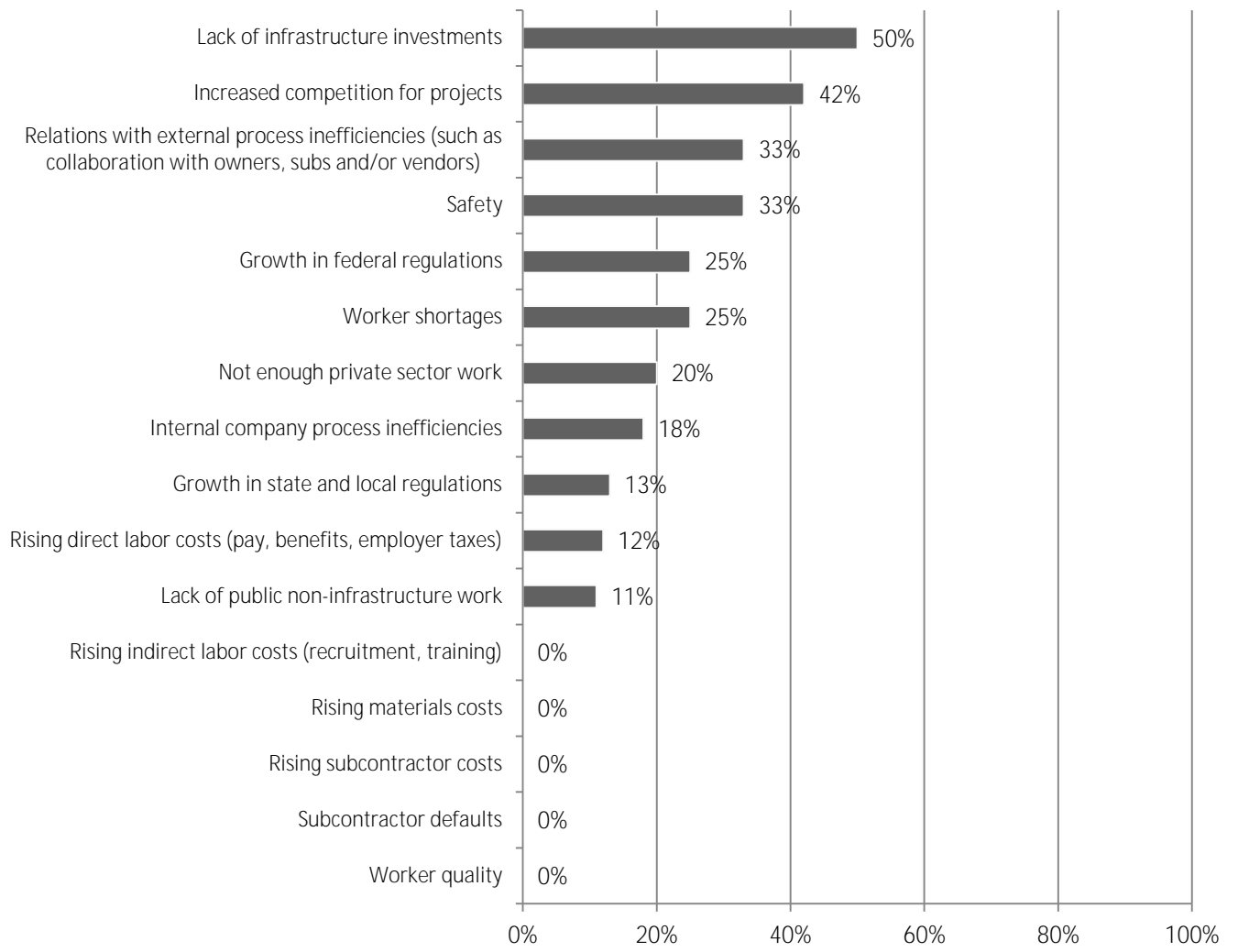
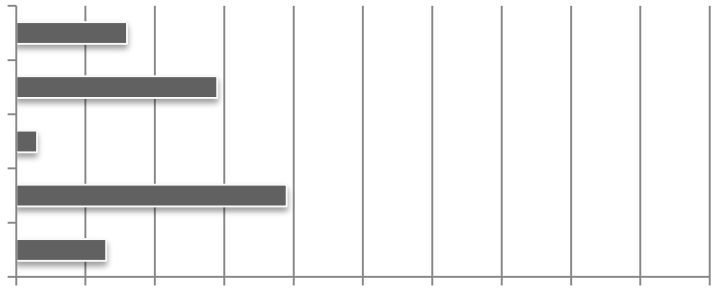
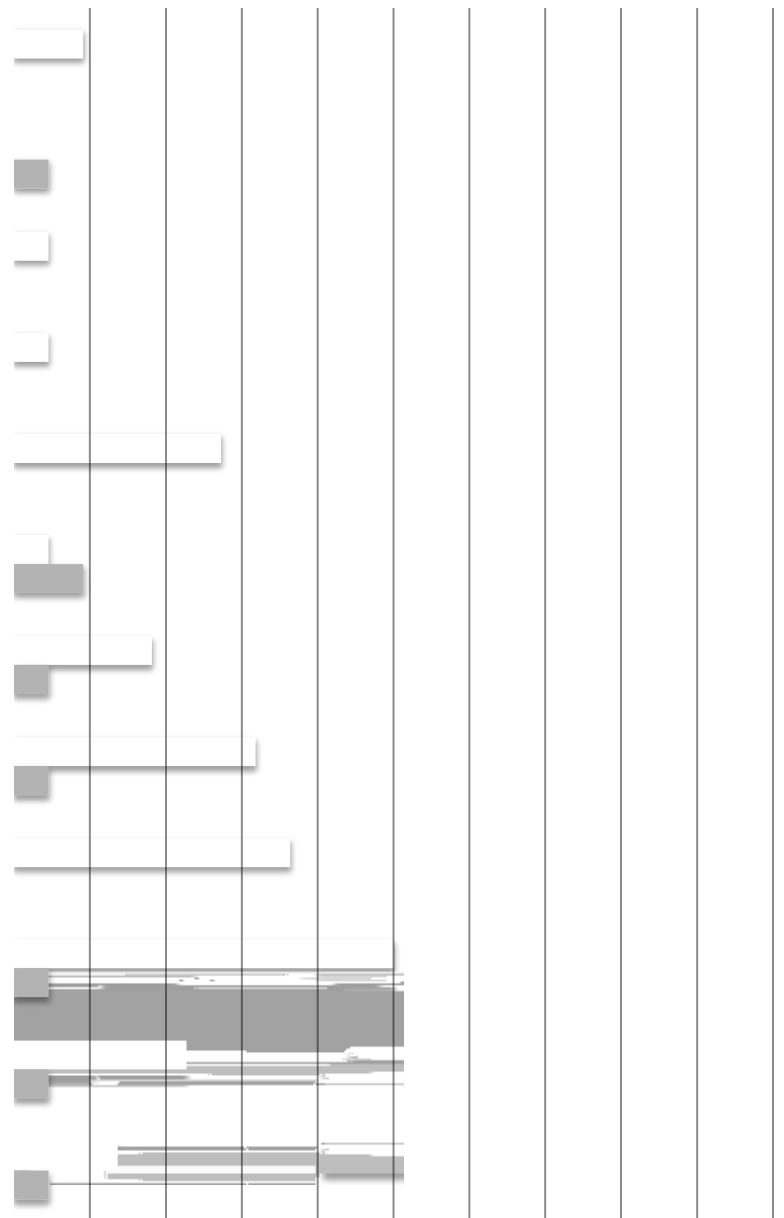
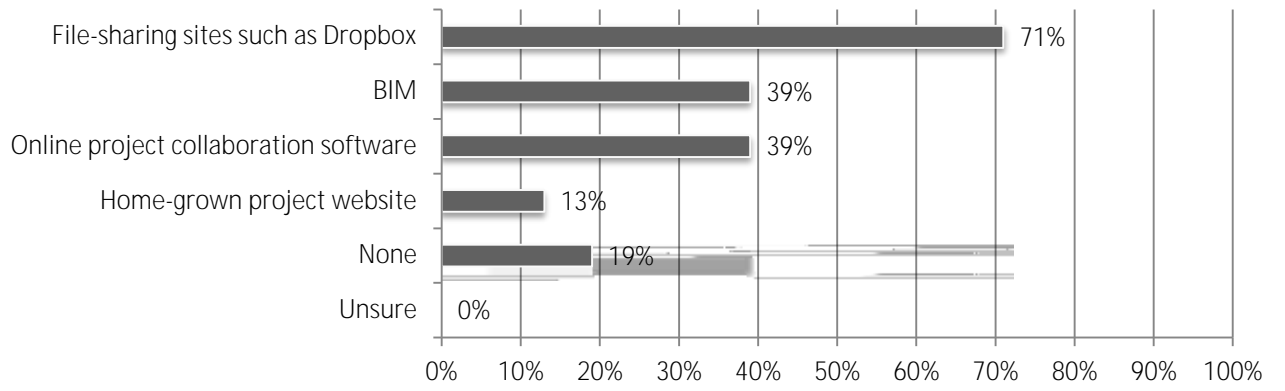
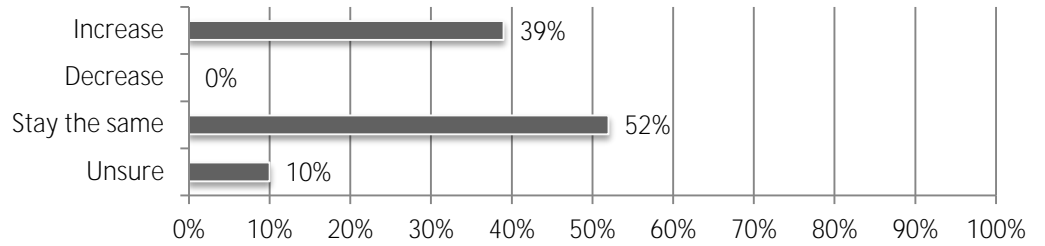
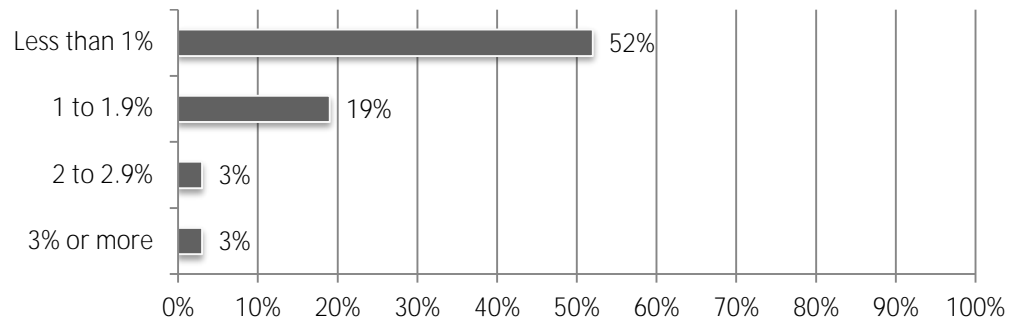


Private Office	31%	12%	58%	19%
Manufacturing	30%	25%	45%	5%
K-12 School	30%	26%	43%	4%
Hospital	21%	17%	63%	4%
Higher Education	28%	24%	48%	4%
Retail, Warehouse, Lodging	19%	15%	65%	4%
Power	20%	20%	60%	0%
All projects	18%	29%	54%	-11%
Water/Sewer	18%	29%	53%	-12%
Public Building	13%	26%	61%	-13%
Transportation (e.g., transit, rail, airport)	19%	38%	44%	-19%









Software Category	Percentage 1	Percentage 2	Percentage 3	Percentage 4
Accounting software	13%	71%	3%	13%
Building Information Modeling	18%	39%	4%	39%
Client relationship management software	19%	50%	0%	31%
Document management software	13%	67%	0%	20%
Estimating software	17%	73%	0%	10%
Fleet tracking/management software	7%	62%	0%	31%
Human resources software	19%	52%	0%	30%
Payroll software	7%	72%	0%	21%
Prequalification software	11%	57%	0%	32%
Project collaboration software	11%	61%	4%	25%
Project management software	11%	71%	0%	18%
Scheduling software	15%	67%	4%	15%
Service management software	4%	68%	0%	28%
Subcontractor bid management/IT B software	12%	65%	4%	19%

